

**This electronic collection of documents is provided  
for the convenience of the user  
and is Not a Certified Document –**

**The documents contained herein were originally issued  
and sealed by the individuals whose names and license  
numbers appear on each page, on the dates appearing  
with their signature on that page.**

**This file or an individual page  
shall not be considered a certified document.**

# CURB RAMP CONTRACT – ORANGE & ALAMANCE COUNTIES INTERSECTION NUMBER MAPS

|                       |           |
|-----------------------|-----------|
| PROJECT REFERENCE NO. | SHEET NO. |
| 44917.3.14            | 4         |
| R-5787FA              |           |

W. FRANKLIN ST - FROM ELIZABETH ST TO EASTGATE SHOPPING CENTER  
CHAPEL HILL, ORANGE COUNTY

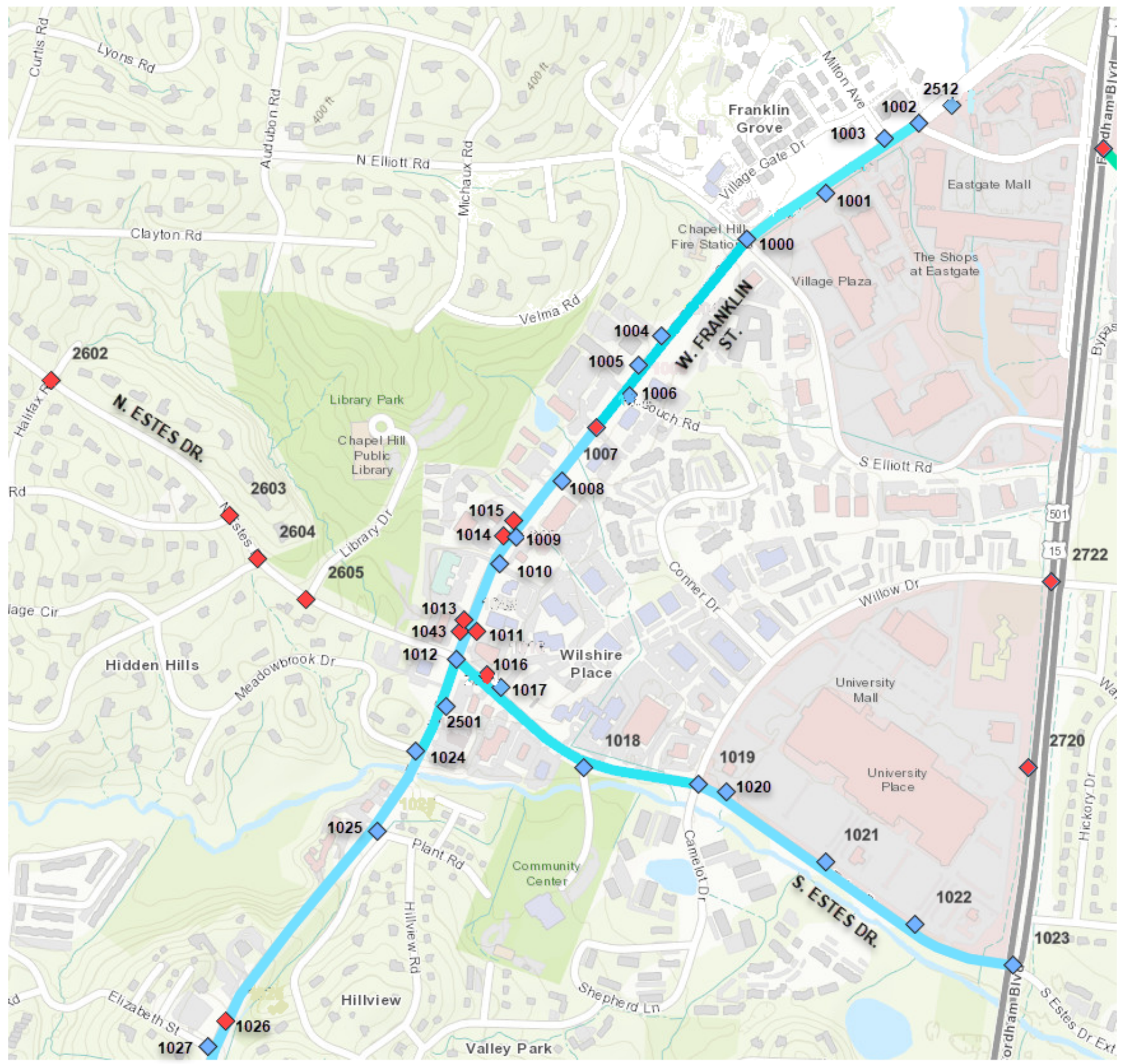
S. ESTES DR - FROM W. FRANKLIN ST TO US 15-501 (FORDHAM BLVD)  
CHAPEL HILL, ORANGE COUNTY

## PROJECT NOTES ALL SHEETS

THE INTERSECTION NUMBERS WITH A RED SQUARE ARE COMPLIANT INTERSECTIONS, THEREFORE NO WORK WILL BE DONE AT THESE INTERSECTIONS.

ALL INTERSECTIONS WITH A BLUE SQUARE WILL BE LISTED IN THE SUMMARY OF QUANTITIES WITH THE APPROPRIATE WORK TO BE COMPLETED.

THE PROJECT DELIVERY UNIT HAS INTERSECTION DETAIL SHEETS AVAILABLE UPON REQUEST AT (336) 487-0075.

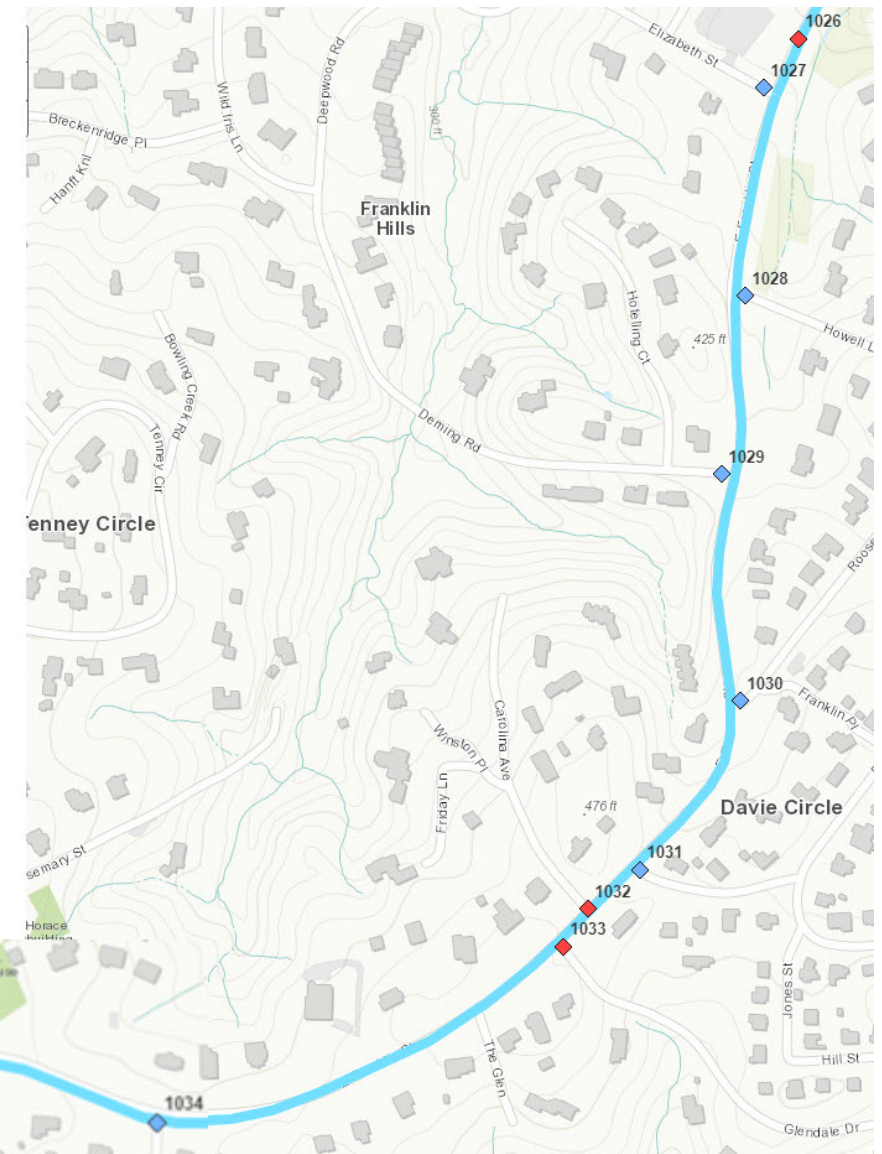
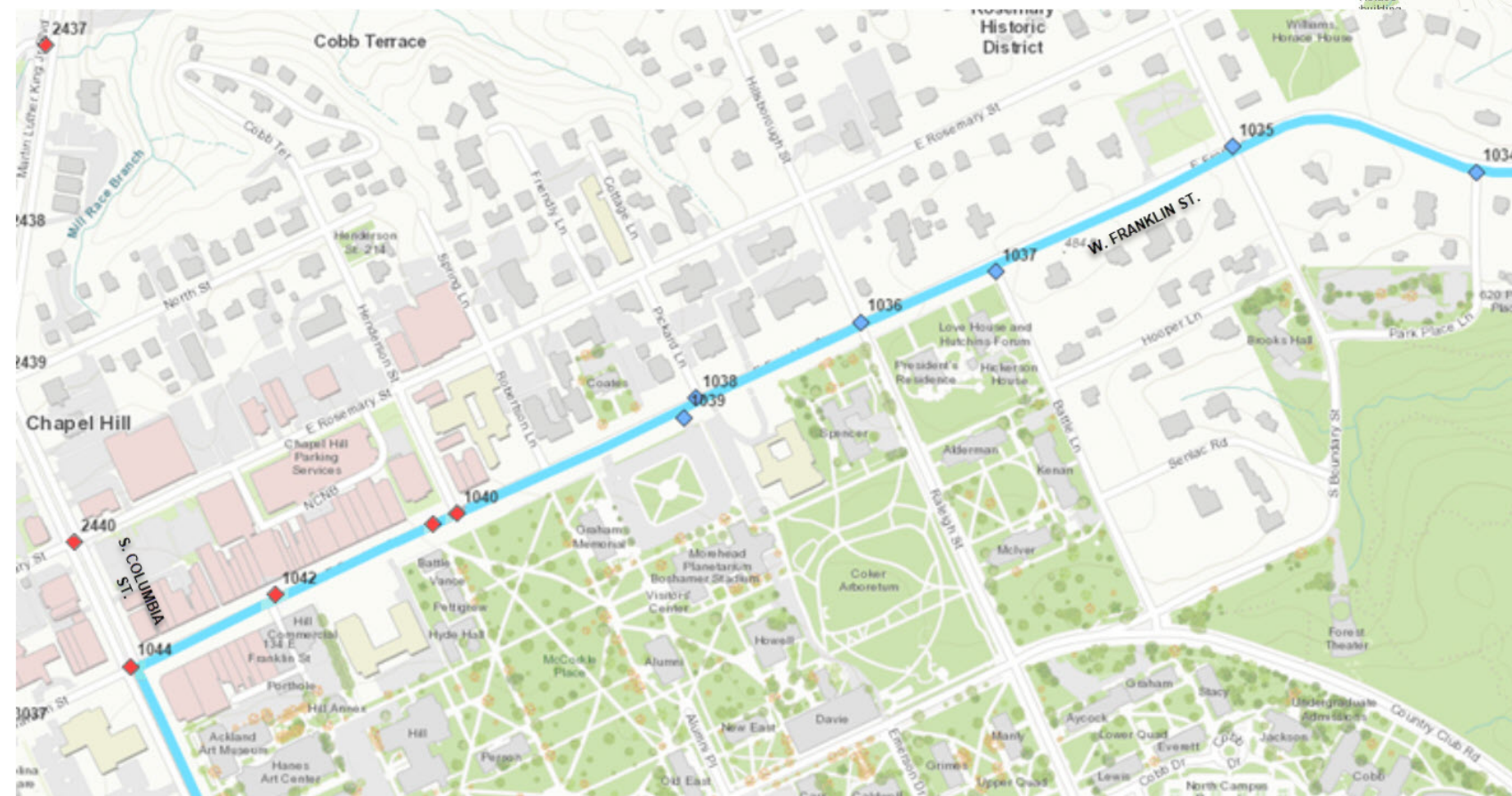


29-AUG-2019 11:31  
 S:\CADD\2019\CONTRACTS\R-5787\F\_CADD\R-5787F\_Rdy\_BLANK\_PLAN\_SHEET.dgn  
 5/14/19

# CURB RAMP CONTRACT – ORANGE & ALAMANCE COUNTIES INTERSECTION NUMBER MAPS

|                       |           |
|-----------------------|-----------|
| PROJECT REFERENCE NO. | SHEET NO. |
| 44917.3.14            | 5         |
| R-5787FA              |           |

W. FRANKLIN ST - FROM S. COLUMBIA ST TO ELIZABETH ST  
CHAPEL HILL, ORANGE COUNTY



29-AUG-2019 10:31  
 S:\CADD\5787\5787\CONTRACTS\R\_5787\F\_CADD\R\_5787F\_Rdy\_BLANK\_PLAN\_SHEET.dgn  
 5/14/99

# CURB RAMP CONTRACT – ORANGE & ALAMANCE COUNTIES INTERSECTION NUMBER MAPS

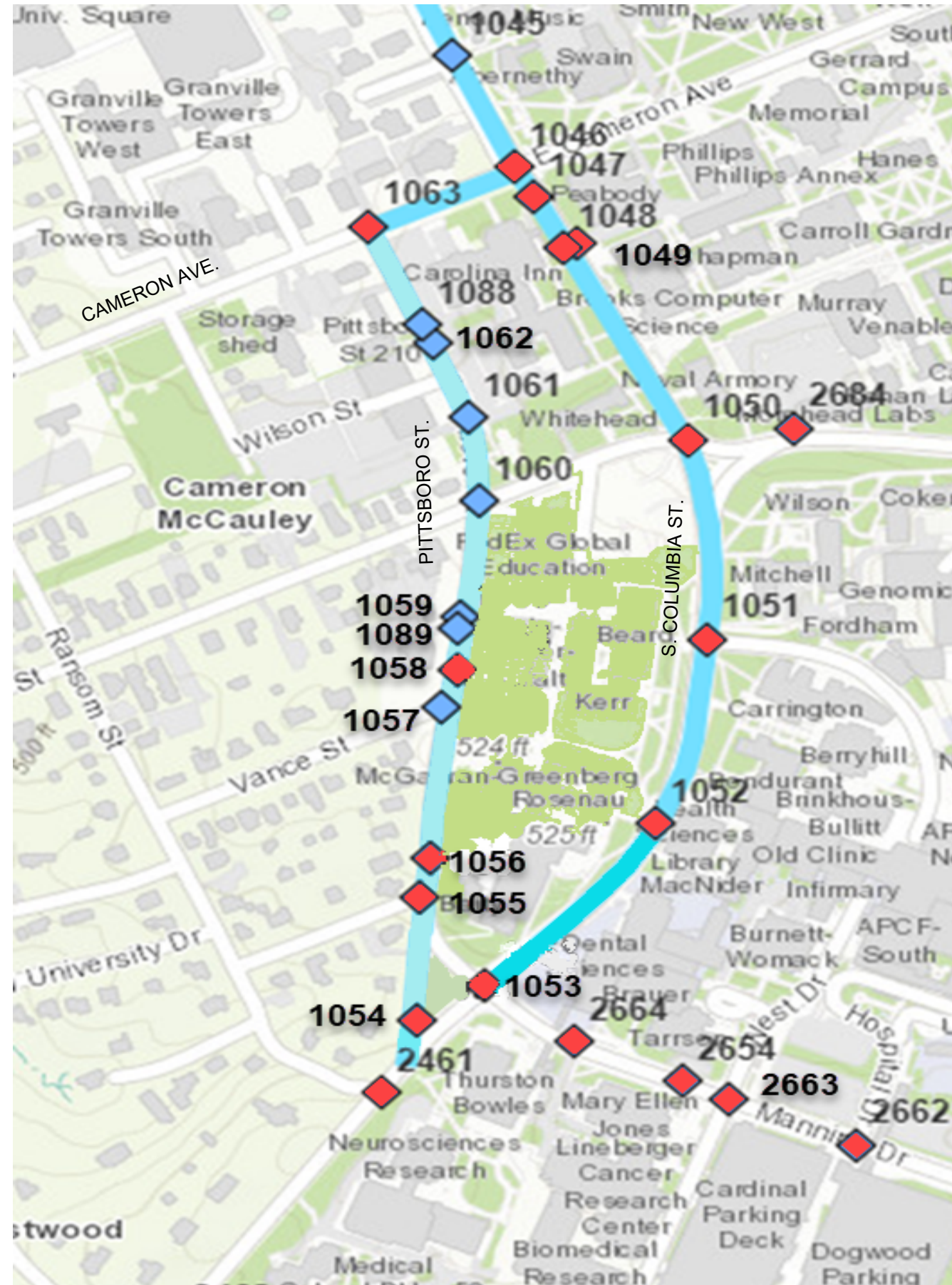
|                       |           |
|-----------------------|-----------|
| PROJECT REFERENCE NO. | SHEET NO. |
| 44917.3.14            | 6         |

R-5787FA

S. COLUMBIA ST - FROM FRATERNITY COURT TO  
W. CAMERON AVE.

PITTSBORO ST - FROM W. CAMERON AVE TO  
VANCE ST.

CHAPEL HILL, ORANGE COUNTY

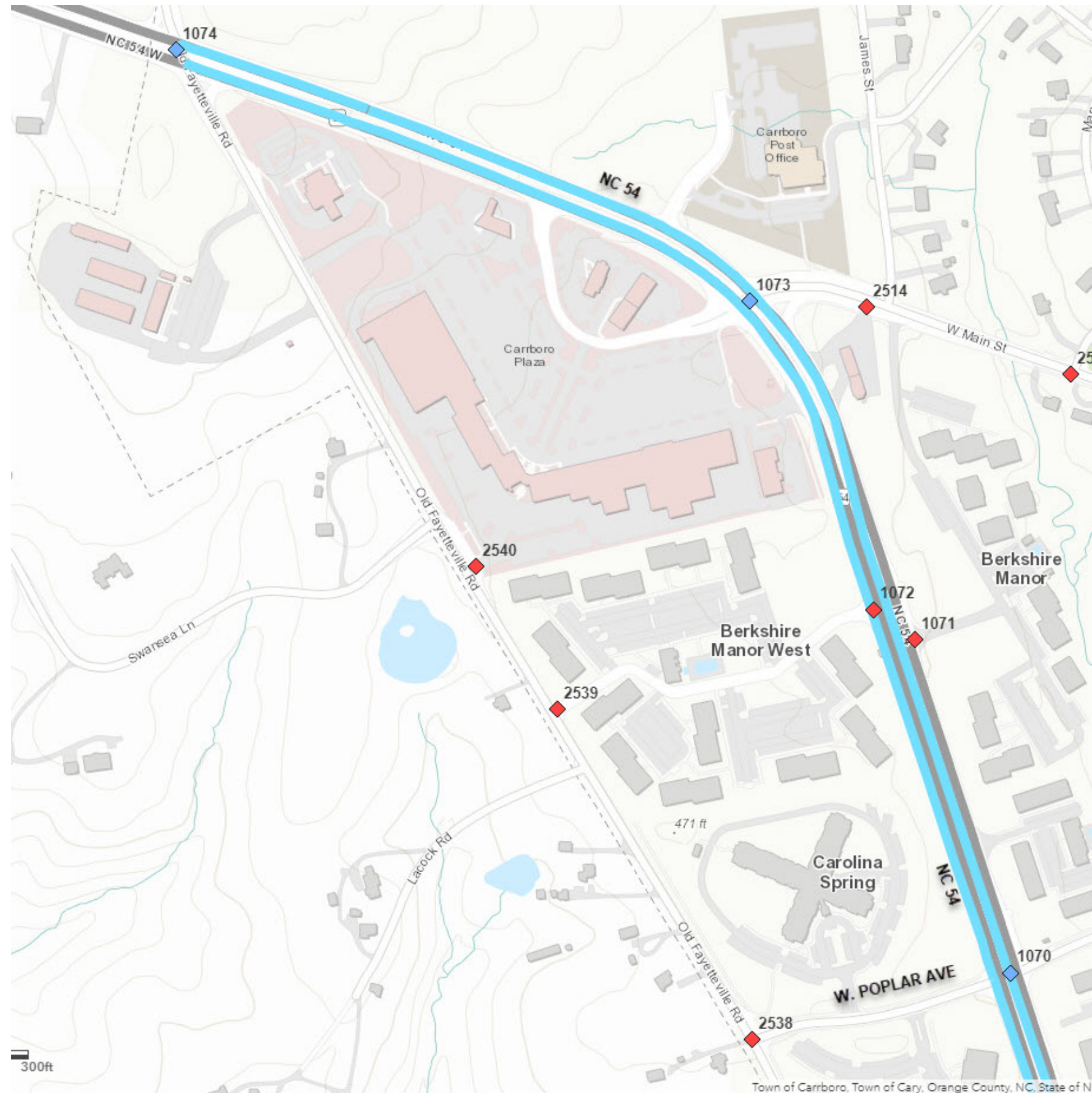


29-AUG-2019 11:32  
 S:\CADD\2019\CONTRACTS\R-5787\F\CADD\R-5787F-Rdy\_BlanK\_PLAN\_SHEET.dgn  
 5/14/19

# CURB RAMP CONTRACT – ORANGE & ALAMANCE COUNTIES INTERSECTION NUMBER MAPS

|                       |           |
|-----------------------|-----------|
| PROJECT REFERENCE NO. | SHEET NO. |
| 44917.3.14            | 7         |
| R-5787FA              |           |

NC 54 - FROM OLD FAYETTEVILLE  
RD TO W. POPLAR AVE  
CARRBORO, ORANGE COUNTY

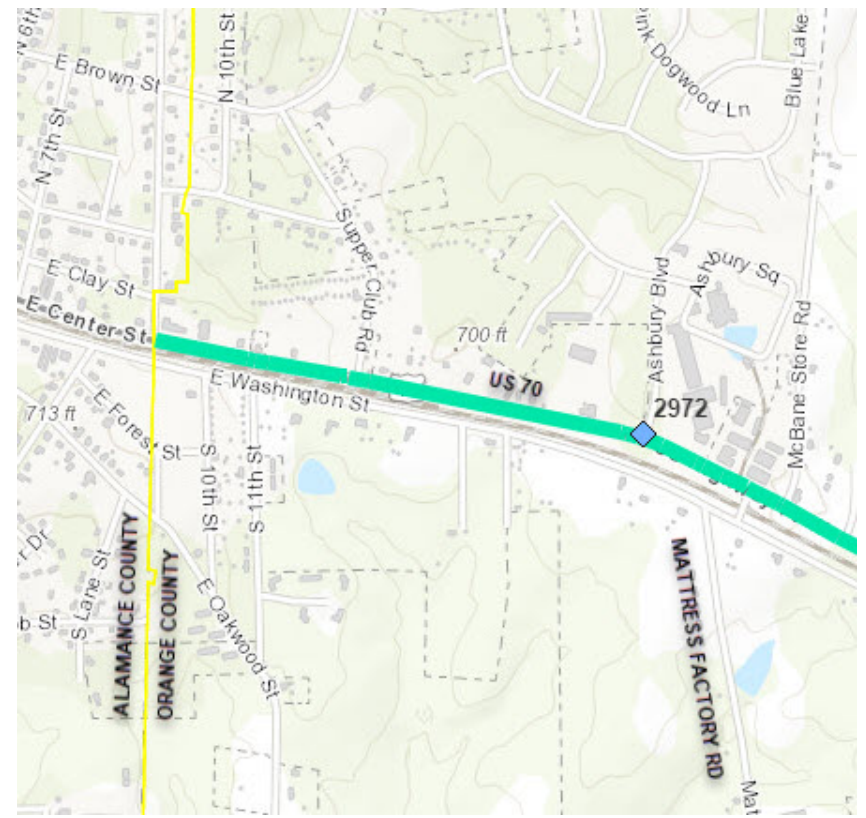


Town of Carrboro, Town of Cary, Orange County, NC, State of N

5/14/99  
 29-AUG-2019 16:32  
 S:\006\06\01\VISION\WIDE\RS787 ADA RAMP\2019\CONTRACTS\R\_5787\F\_CADD\R\_5787F-Rdy\_BLANK PLAN SHEET .dgn

# CURB RAMP CONTRACT – ORANGE & ALAMANCE COUNTIES

## INTERSECTION NUMBER MAPS

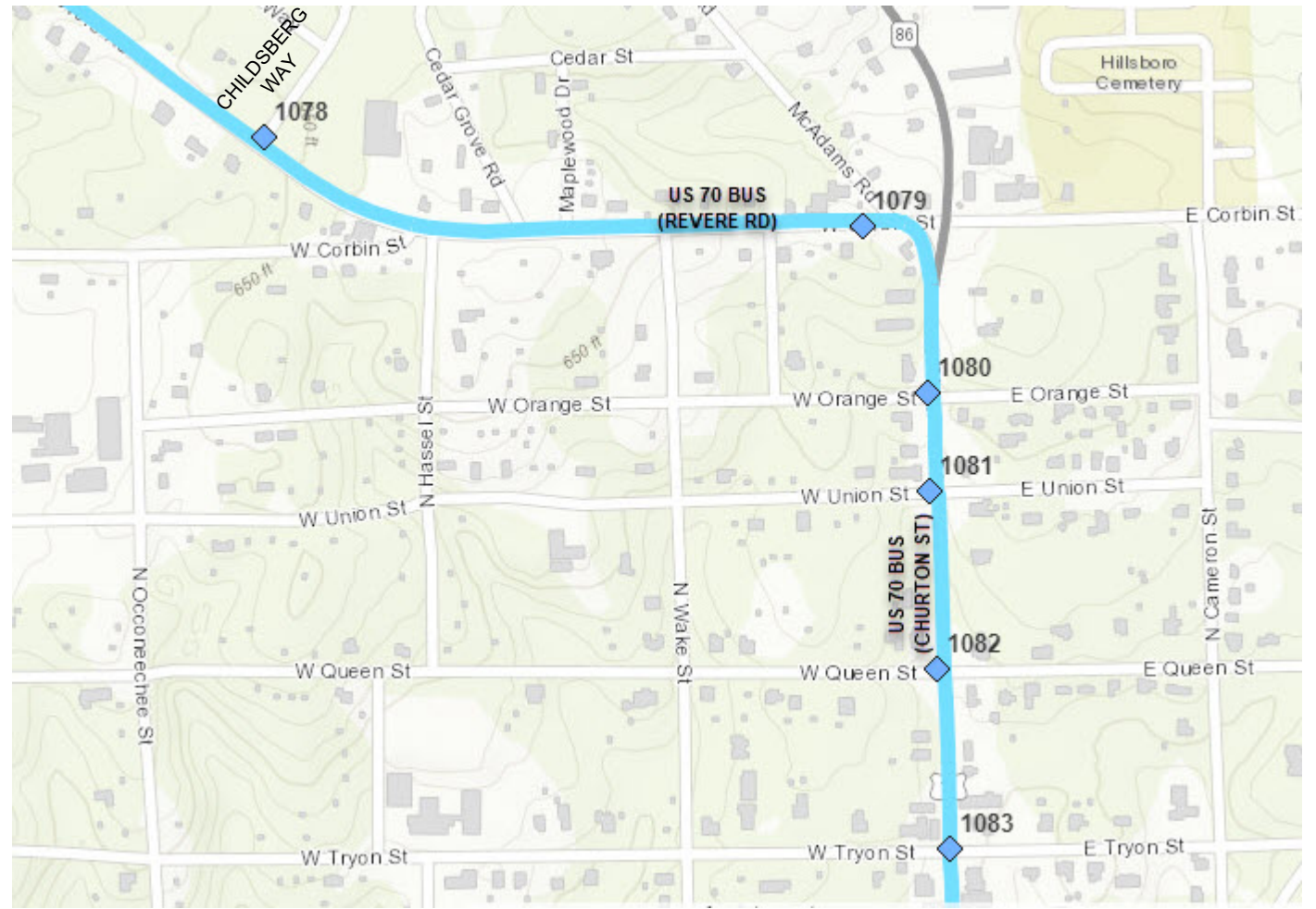


US 70 AT ASHBURY BLVD.  
MEBANE, ORANGE COUNTY

US 70 (CORNELIUS ST) - FROM US 70 BUS (REVERE RD) TO CHILDSBERG WAY AND N NASH ST - FROM US 70 BUS (REVERE RD) TO LATIMER ST  
HILLSBOROUGH, ORANGE COUNTY



US 70 BUS (REVERE RD) - FROM CHILDSBERG WAY TO US 70 BUS (CHURTON ST) AND US 70 BUS (CHURTON ST) - FROM US 70 (REVERE RD) TO W. TRYON ST  
HILLSBOROUGH, ORANGE COUNTY



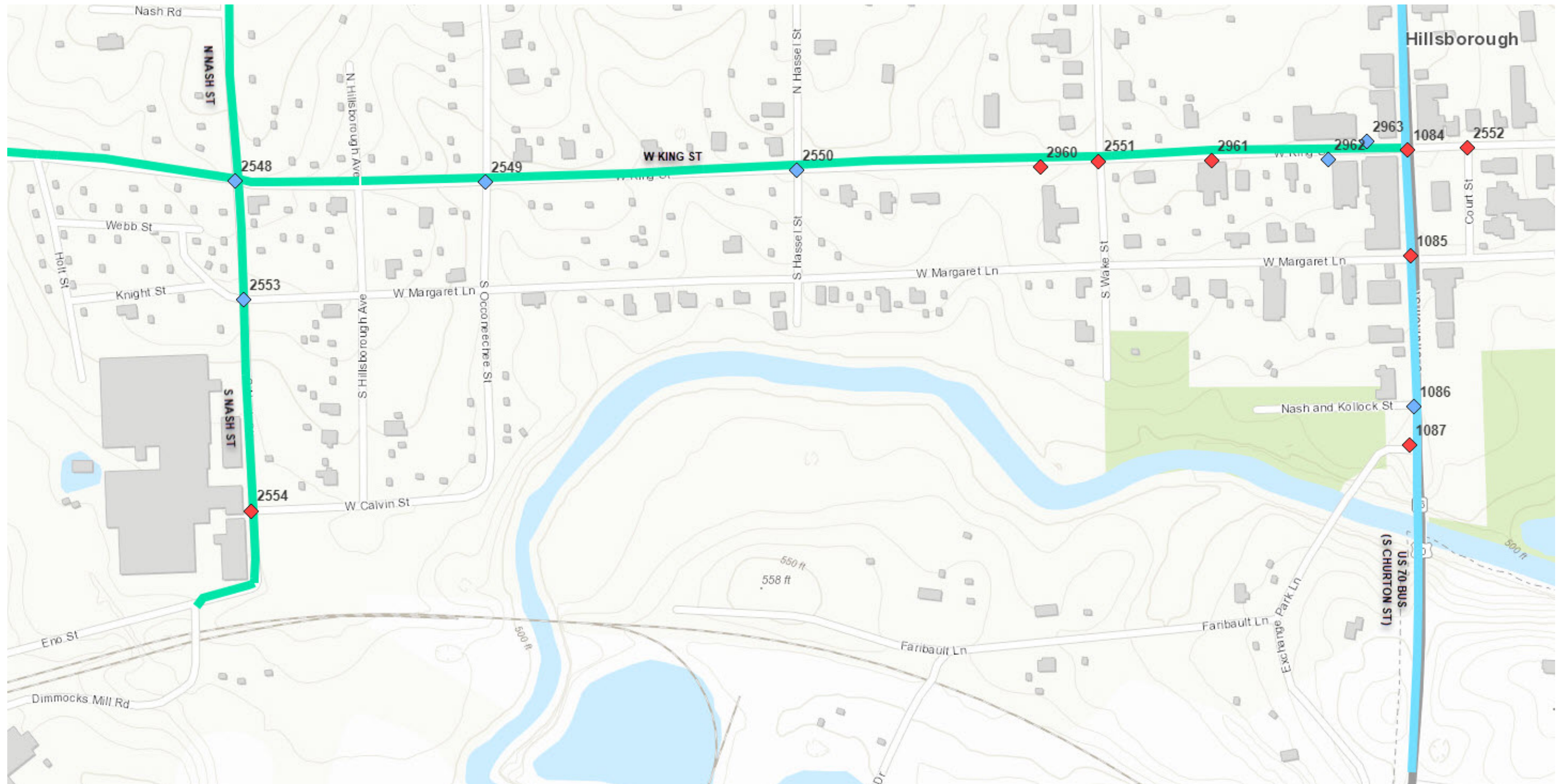
# CURB RAMP CONTRACT – ORANGE & ALAMANCE COUNTIES INTERSECTION NUMBER MAPS

|                       |           |
|-----------------------|-----------|
| PROJECT REFERENCE NO. | SHEET NO. |
| 44917.3.14            | 9         |
| R-5787FA              |           |

S. NASH ST - FROM W. KING ST TO ENO ST  
HILLSBOROUGH, ORANGE COUNTY

W. KING ST - FROM S. NASH ST TO US 70 BUS (S CHURTON ST)  
HILLSBOROUGH, ORANGE COUNTY

US 70 BUS (S. CHURTON ST) AT  
NASH AND KOLLOK ST  
HILLSBOROUGH, ORANGE COUNTY

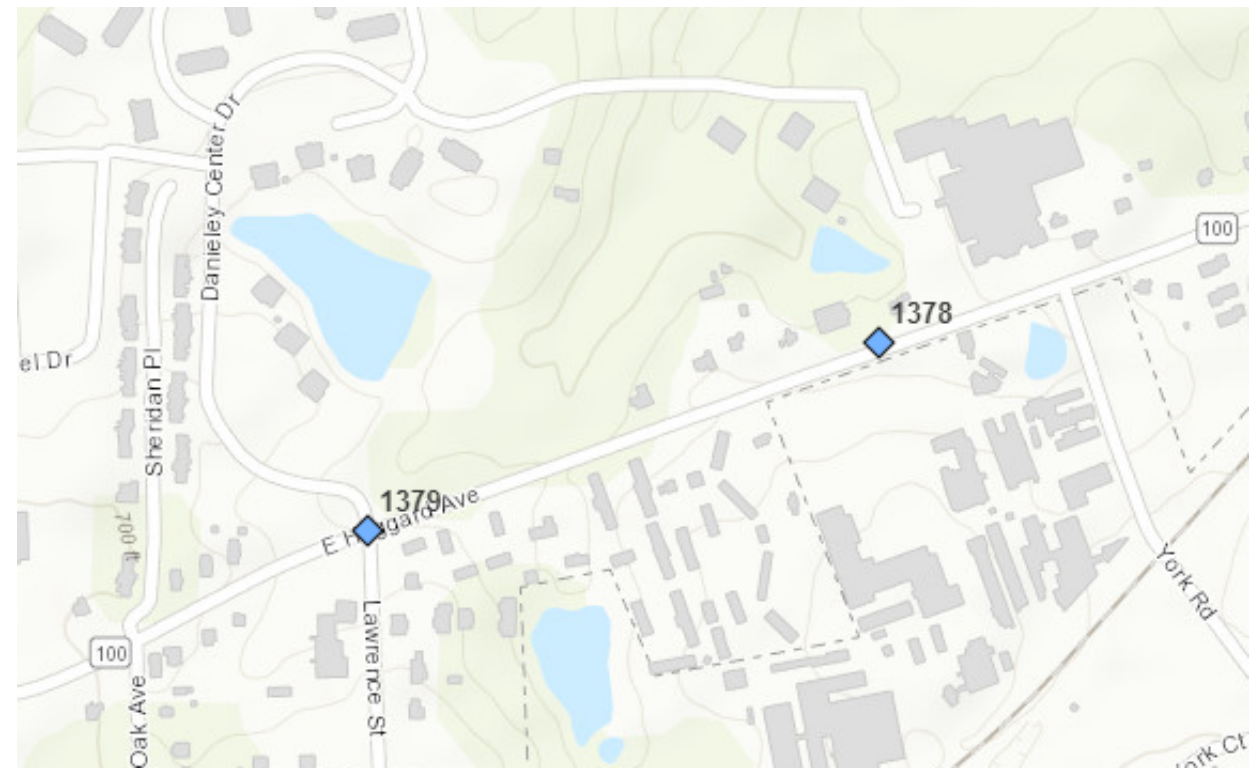


5/14/99  
 29-AUG-2019 16:33  
 S:\GIS\PROJECTS\2019\CONTRACTS\R\_5787\F\_CADD\R-5787F\_Rdy\_BLANK\_PLAN\_SHEET.dgn

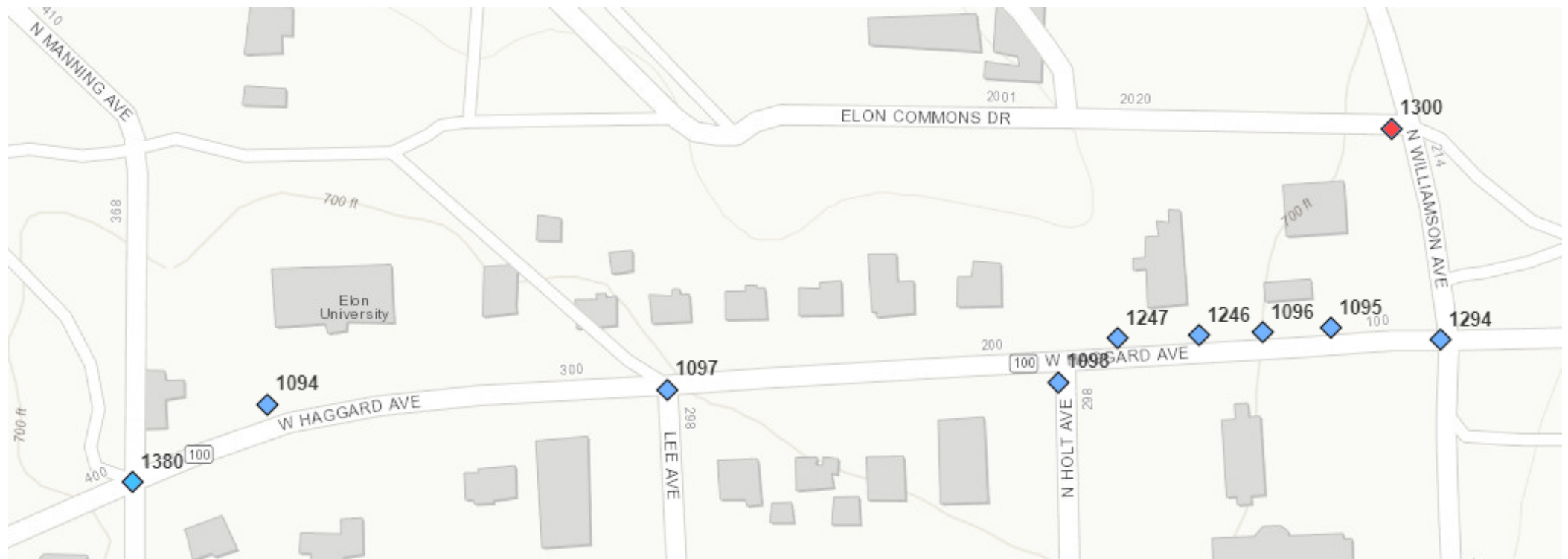
# CURB RAMP CONTRACT – ORANGE & ALAMANCE COUNTIES INTERSECTION NUMBER MAPS



MEBANE OAKS RD. AT S. EIGHTH ST.  
MEBANE, LAMANCE COUNTY



E. HAGGARD AVE. - FROM N. OAK AVE. TO YORK RD.  
ELON, ALAMANCE COUNTY



W. HAGGARD AVE. -  
FROM N. MANNING AVE.  
TO N. WILLIAMSON AVE.  
ELON, ALAMANCE  
COUNTY

06-JAN-2019 10:15  
 S:\0606\CONTRACTS\N-5787-F\CADD\N-5787F-Rdy-BLANK PLAN SHEET.dgn  
 \$\$\$\$\$\$USERNAME\$\$\$\$\$\$



# CURB RAMP CONTRACT – ORANGE & ALAMANCE COUNTIES INTERSECTION NUMBER MAPS

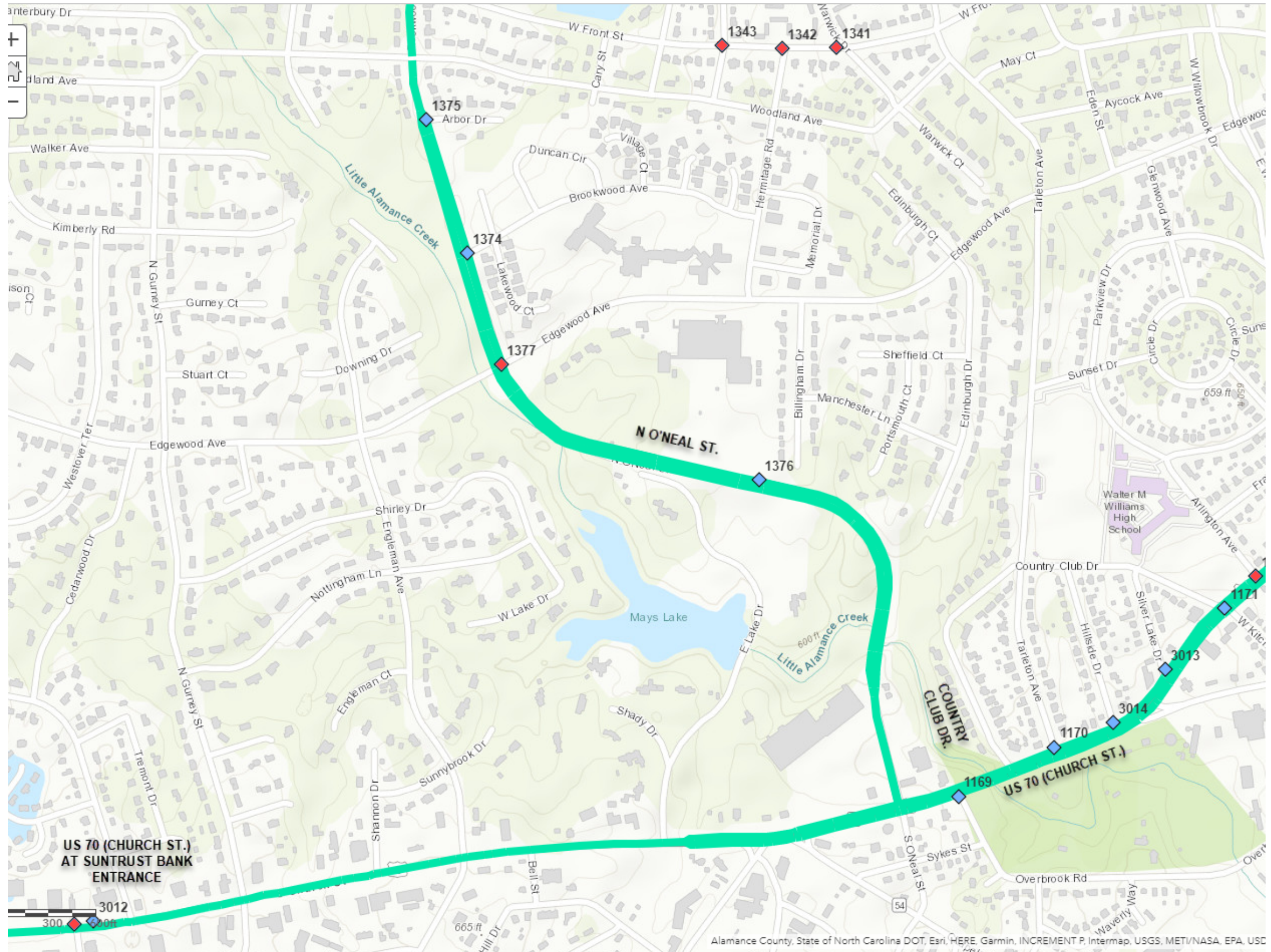
|                       |           |
|-----------------------|-----------|
| PROJECT REFERENCE NO. | SHEET NO. |
| 44917.3.14            | 11        |
| R-5787FA              |           |

US 70 (CHURCH ST.) -  
FROM COLONIAL DR  
TO W. KITCHIN ST.

US 70 (CHURCH ST.)  
AT SUNTRUST BANK  
ENTRANCE

N O'NEAL ST, - FROM  
US 70 (CHURCH ST.)  
TO ARBOR ST.

BURLINGTON,  
ALAMANCE COUNTY



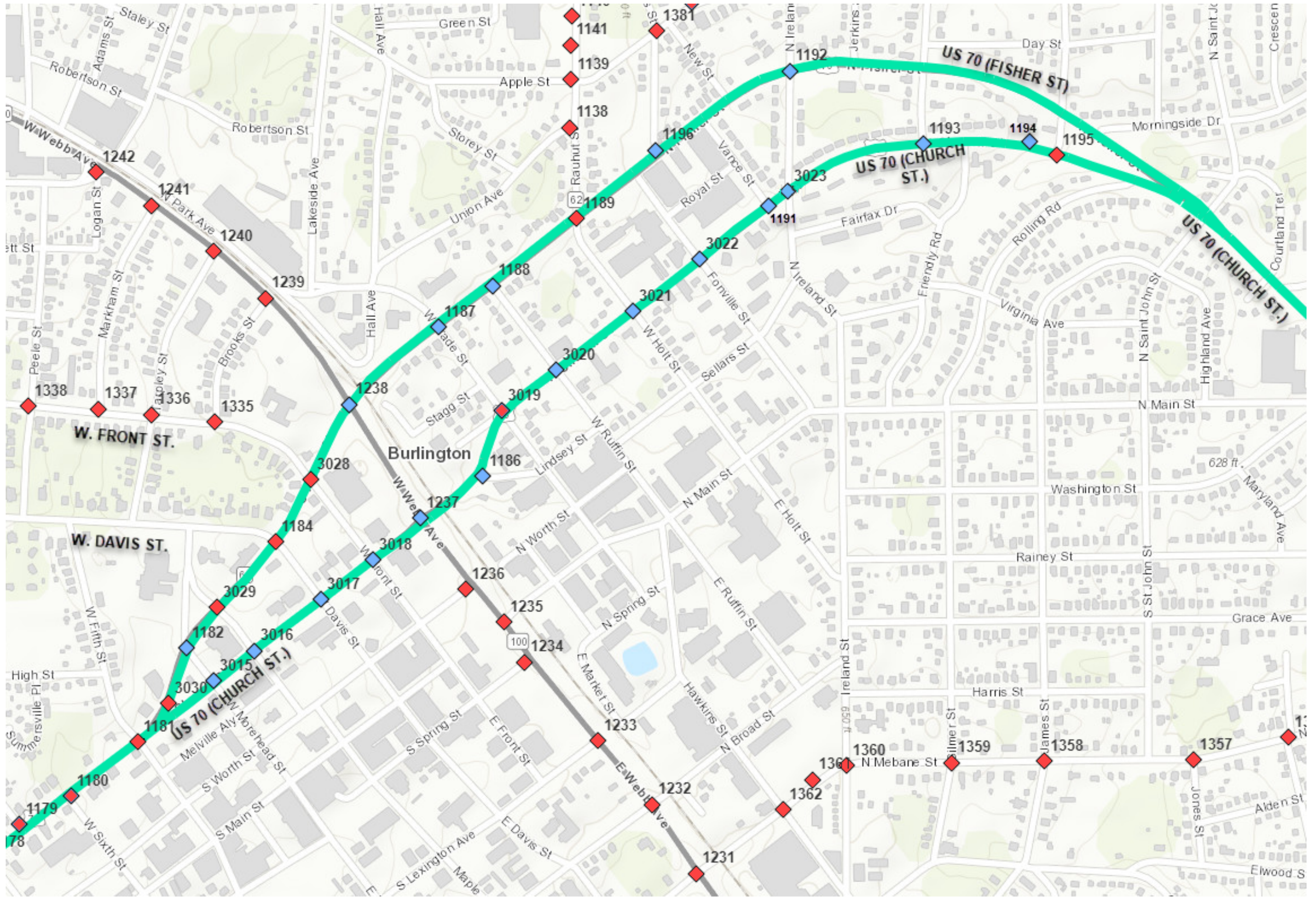
Alamance County, State of North Carolina DOT, Esri, HERE, Garmin, INCREMENT P, Intermap, USGS, METI/NASA, EPA, US

29-AUG-2019 10:34  
 S:\GIS\PROJECTS\2019\CONTRACTS\R-5787\F\_CADD\R-5787F\_Rdy\_BLANK\_PLAN\_SHEET.dgn  
 5/14/99

# CURB RAMP CONTRACT – ORANGE & ALAMANCE COUNTIES

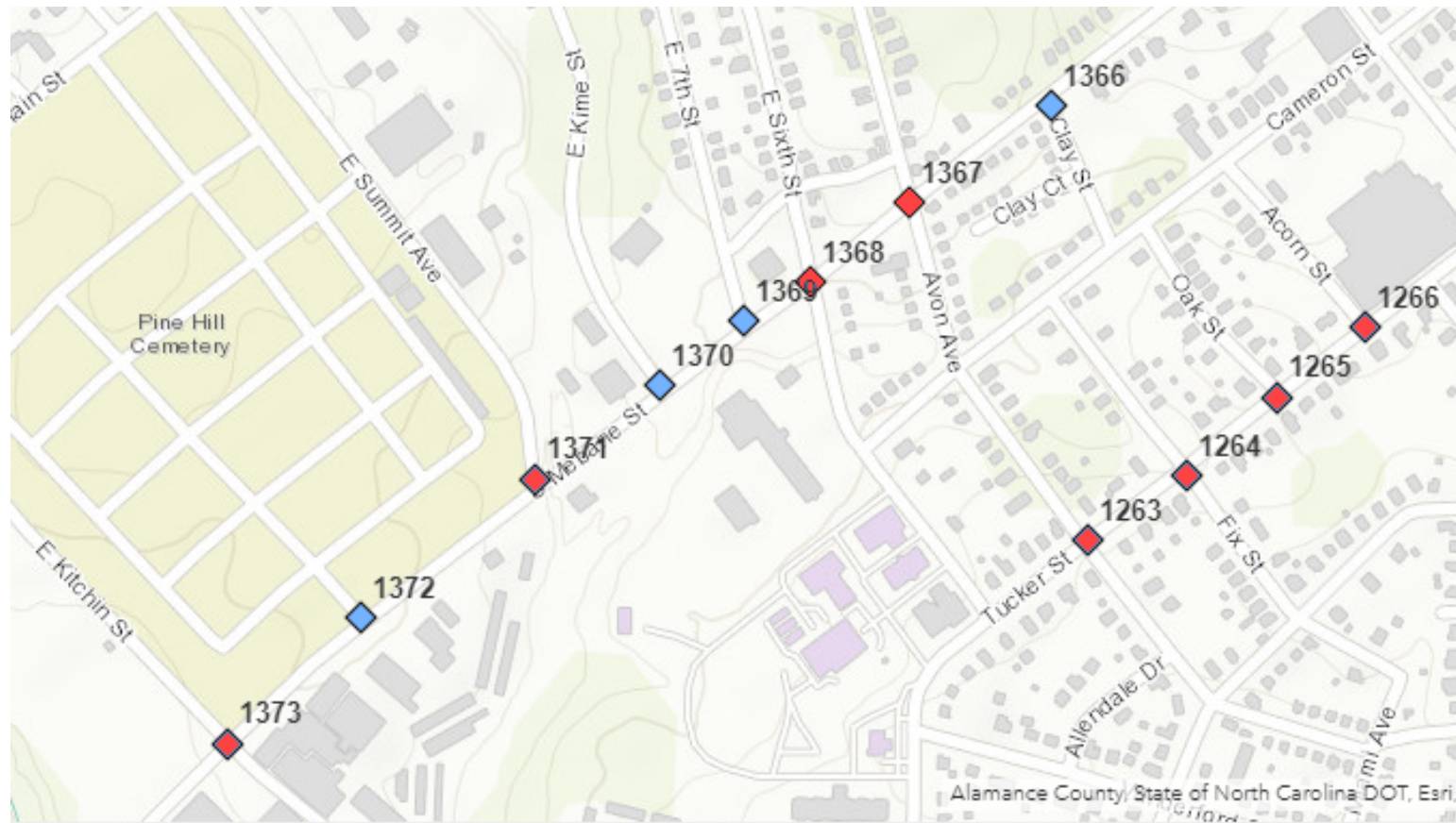
## INTERSECTION NUMBER MAPS

US 70 (CHURCH ST/FISHER ST) - FROM FIFTH ST TO N. FISHER ST, BURLINGTON, ALAMANCE COUNTY



29-AUG-2019 11:34 AM S:\GIS\PROJECTS\2019\CONTRACTS\R-5787\F\_CADD\R-5787F\_Rdy\_BLANK\_PLAN\_SHEET.dgn

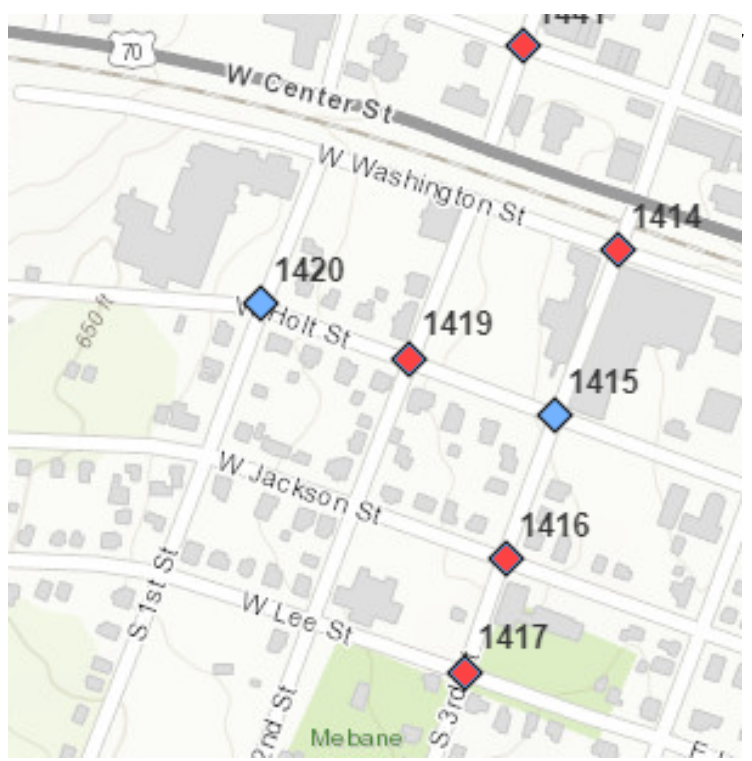
# CURB RAMP CONTRACT – ORANGE & ALAMANCE COUNTIES INTERSECTION NUMBER MAPS



S. MEBANE ST - FROM E. KITCHIN ST. TO CLAY ST.  
BURLINGTON, ALAMANCE COUNTY

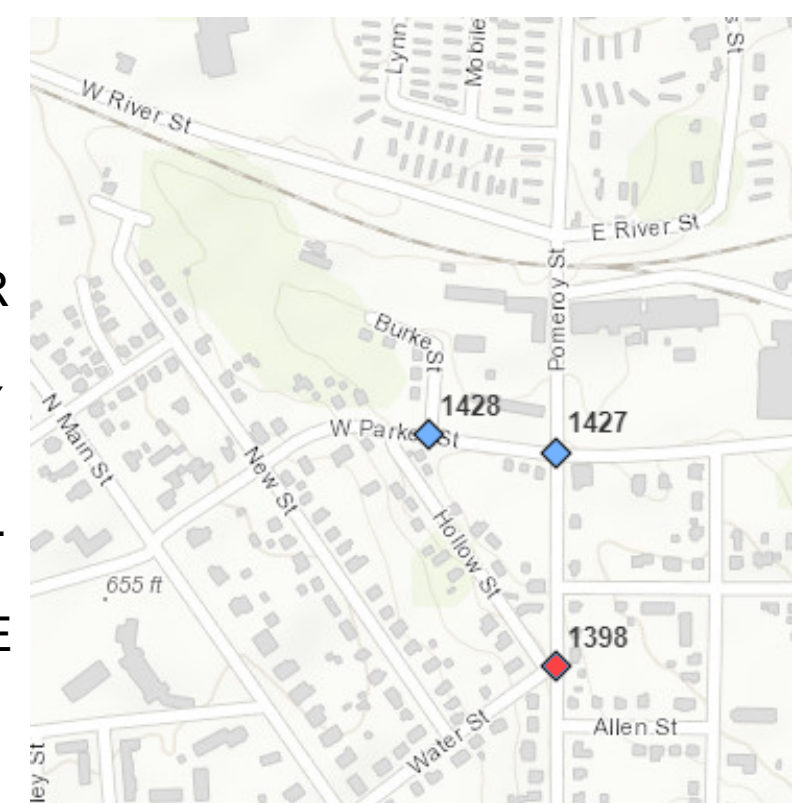


STONE ST. AT EDWARDS AUTOMOTIVE  
HAW RIVER, ALAMANCE COUNTY



W. HOLT ST - FROM  
S. 1ST ST.  
TO S. 3RD ST.  
MEBANE,  
ALAMANCE COUNTY

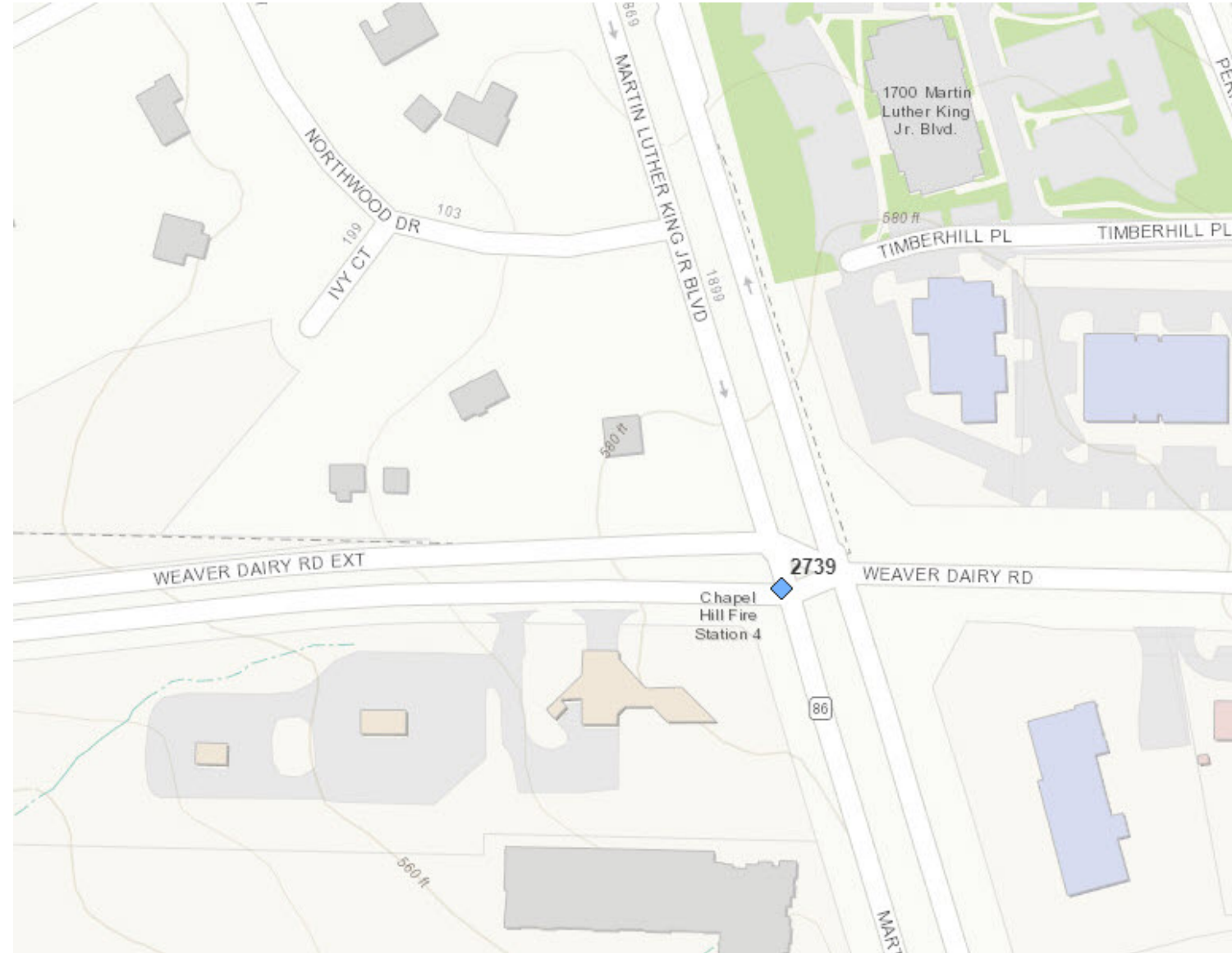
E. PARKER ST. -  
POMEROY ST TO  
BURKE ST.  
GRAHAM,  
ALAMANCE  
COUNTY



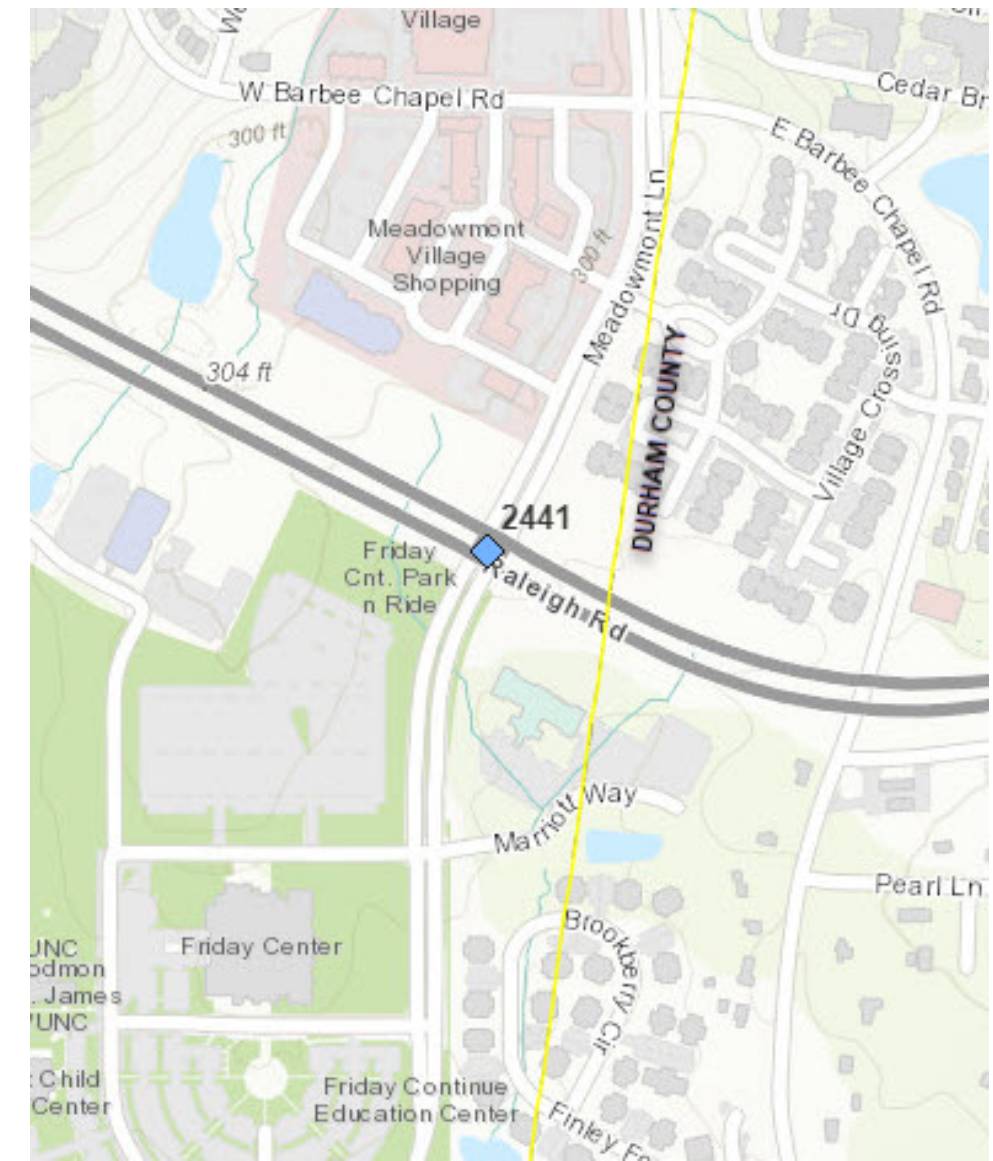
5/14/99  
06-JAN-2021 11:49  
S:\06\CONTRACTS\19\5787 ADA RAMPS 2019\CONTRACTS\19\5787-F\CADD\R-5787F-Rdy-BLANK PLAN SHEET.dgn  
\$\$\$\$\$USERNAME\$\$\$\$\$

# CURB RAMP CONTRACT – ORANGE & ALAMANCE COUNTIES INTERSECTION NUMBER MAPS

| PROJECT REFERENCE NO. | SHEET NO. |
|-----------------------|-----------|
| 44917.3.14            | 14        |
| R-5787FA              |           |



NC 86 (MARTIN LUTHER KING JR BLVD) AT WEAVER DIARY RD  
CHAPEL HILL, ORANGE COUNTY



NC 54 (RALEIGH RD) AT MEADOWMONT LN  
CHAPEL HILL, ORANGE COUNTY

**THE INTERSECTIONS OF NC86 (MARTIN LUTHER KING JR BLVD) AT WEAVER DIARY RD AND NC 54 (RALEIGH RD) AT MEADOWMONT LN WILL REQUIRE COORDINATION WITH DIVISION 7 TRAFFIC SERVICES UNIT. CONTACT MIKE GARRISON WITH THE DIVISION 7 TRAFFIC SERVICES UNIT AT (336) 690-6780, FOR THE PRECONSTRUCTION METTING AND TWO WEEKS PRIOR TO WORKING ON THESE INTERSECTIONS.**

**SEE SHEET 14A AND 14 B FOR DETAIL DRAWINGS OF THE INTERSECTIONS.**

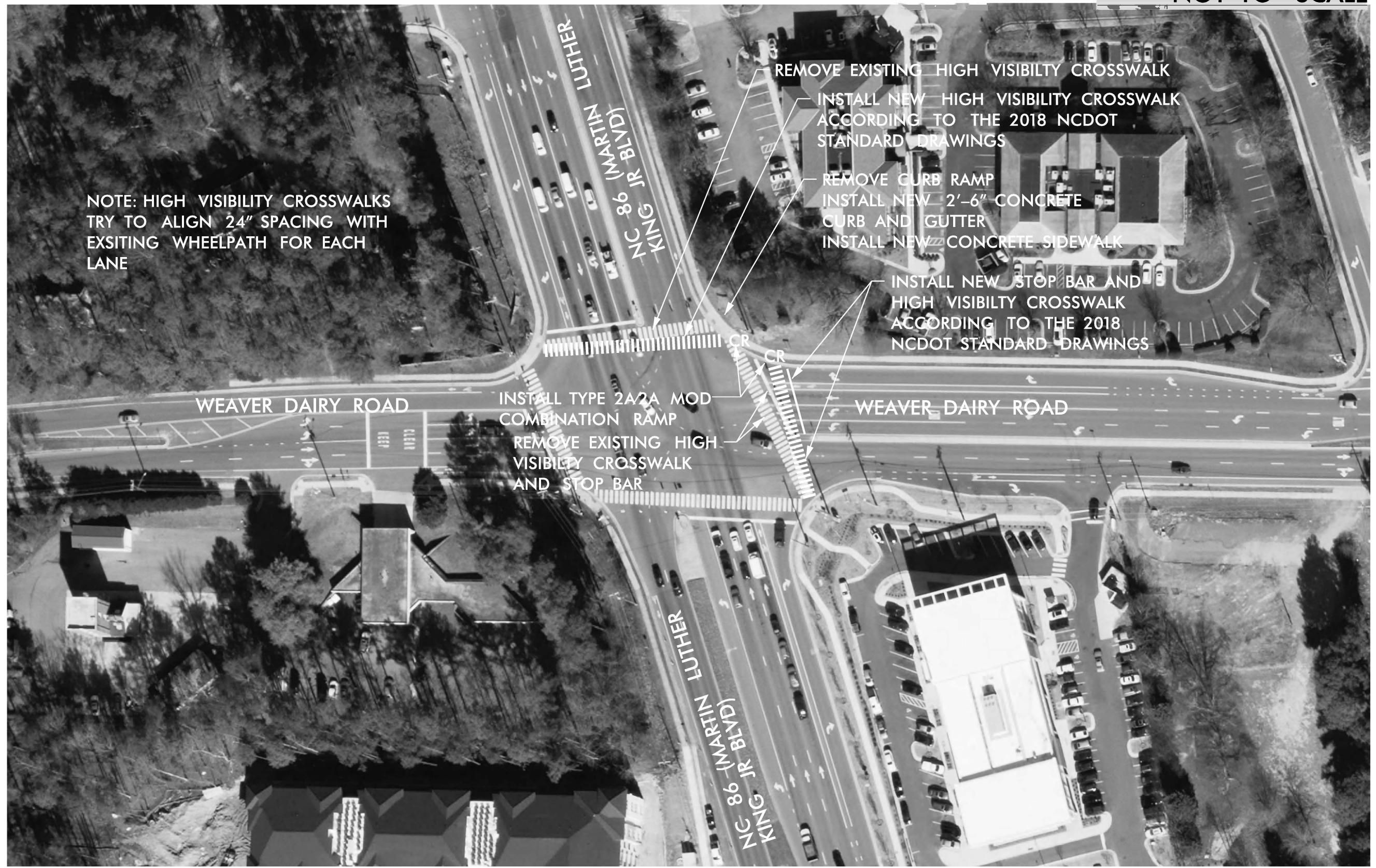
5/14/99  
29-AUG-2019 11:34  
S:\000\06\01\DIVISION\IDE\VR5787 ADA RAMP 2019\CONTRACTS\VR\_5787\F\_CADD\VR-5787F-Rdy\_B\BLANK PLAN SHEET .dgn

# CURB RAMP CONTRACT – ORANGE & ALAMANCE COUNTIES INTERSECTION DETAIL DRAWING

PROJECT REFERENCE NO. 44917.3.14 SHEET NO. 14A

R-5787FA

INT. ID# 2739  
NOT TO SCALE



5/14/09  
SYSTEMS

# CURB RAMP CONTRACT – ORANGE & ALAMANCE COUNTIES INTERSECTION DETAIL DRAWING

|                       |           |
|-----------------------|-----------|
| PROJECT REFERENCE NO. | SHEET NO. |
| 44917.3.14            | 14B       |
| R-5787FA              |           |

INT. ID# 2441  
NOT TO SCALE



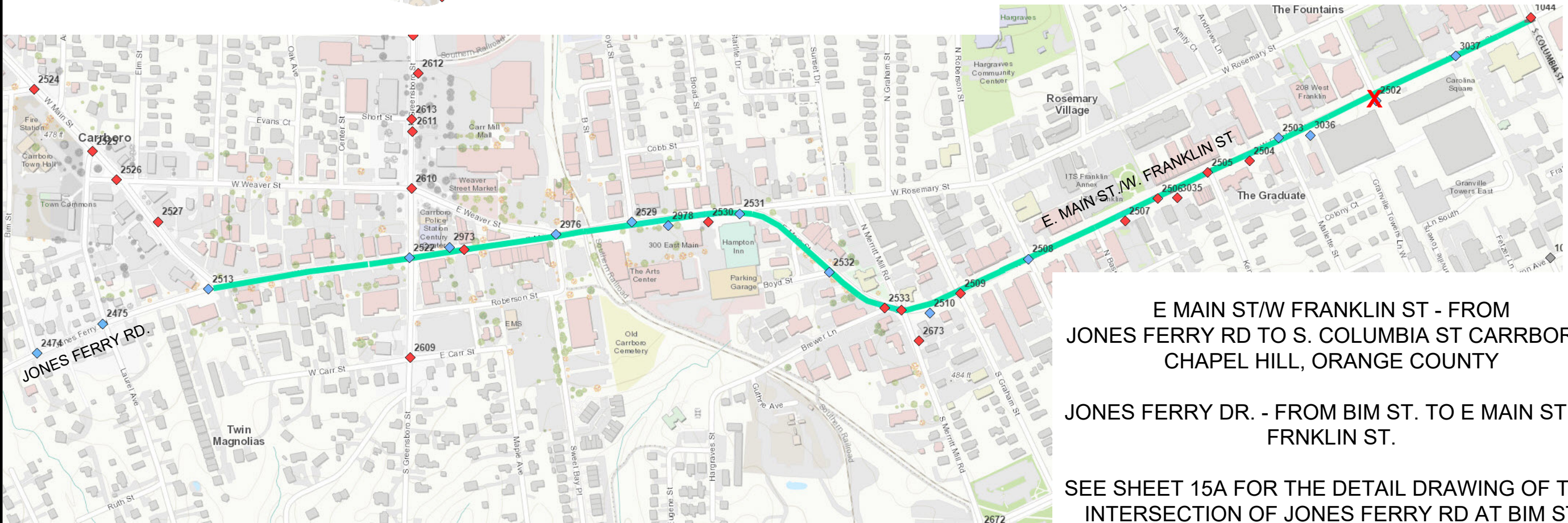
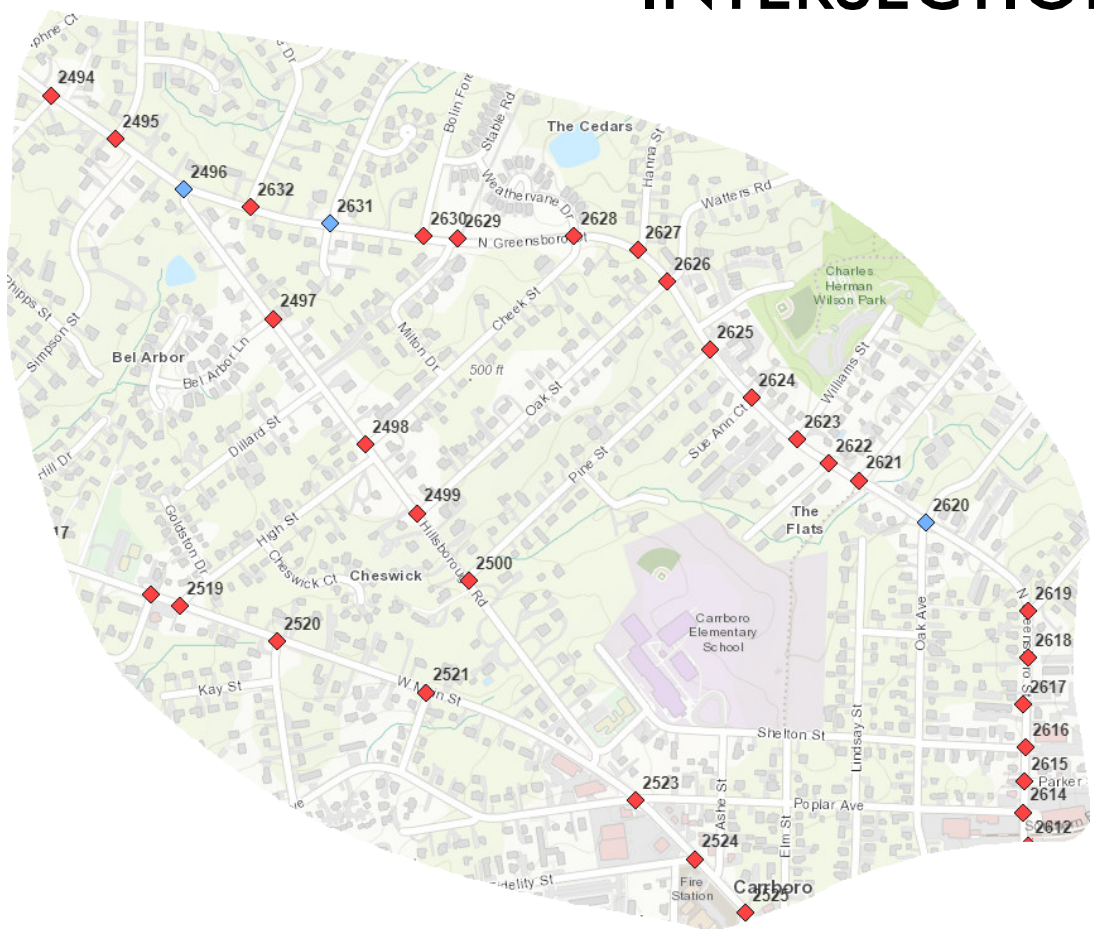
5/14/2019  
SYTIMESS  
C:\PROJECTS\44917.3.14\DRAWINGS\14B.DWG

# CURB RAMP CONTRACT – ORANGE & ALAMANCE COUNTIES

## INTERSECTION NUMBER MAPS

N GREENSBORO ST - FROM POPLAR AVE TO HILLSBOROUGH RD  
CARRBORO, ORANGE COUNTY

SEE SHEET 15B THRU 15D FOR THE DETAIL DRAWING OF THE INTERSECTIONS AT:  
N GREENSBORO ST AT HILLSBOROUGH RD  
N GREENSBORO ST AT ROBERT HUNT DR  
N GREENSBORO ST AT OAK AVE



E MAIN ST/W FRANKLIN ST - FROM JONES FERRY RD TO S. COLUMBIA ST CARRBORO/ CHAPEL HILL, ORANGE COUNTY

JONES FERRY DR. - FROM BIM ST. TO E MAIN ST./W FRNKLIN ST.

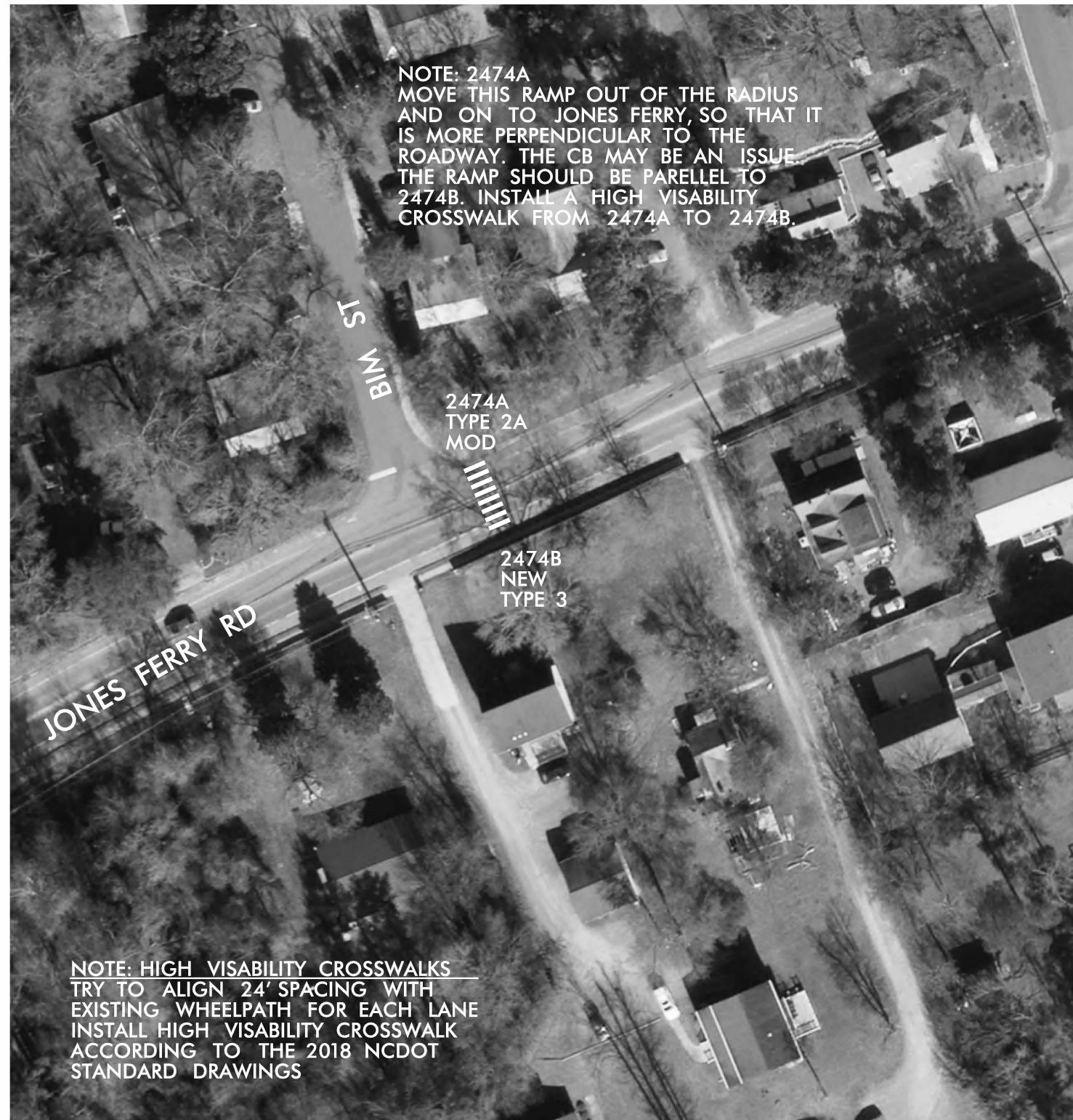
SEE SHEET 15A FOR THE DETAIL DRAWING OF THE INTERSECTION OF JONES FERRY RD AT BIM ST

5/14/99  
 29-AUG-2019 11:41  
 S:\006\16\01\VISION\WIDE\VR5787 ADA RAMPS 2019\CONTRACTS\R\_5787\_F\CADD\R-5787F-Rdy\_B\BLANK PLAN SHEET .dgn

# CURB RAMP CONTRACT – ORANGE & ALAMANCE COUNTIES INTERSECTION NUMBER MAPS

|                       |           |
|-----------------------|-----------|
| PROJECT REFERENCE NO. | SHEET NO. |
| 44917.3.14            | 15A       |
| R-5787FA              |           |

**INT. ID# 2474  
NOT TO SCALE**



5/14/19  
SYTIME  
C:\USERS\ADMINISTRATOR\APPDATA\LOCAL\TEMP\15A



# CURB RAMP CONTRACT – ORANGE & ALAMANCE COUNTIES INTERSECTION NUMBER MAPS

|                       |           |
|-----------------------|-----------|
| PROJECT REFERENCE NO. | SHEET NO. |
| 44917.3.14            | 15B       |
| R-5787F A             |           |

INT. ID# 2496  
NOT TO SCALE



2496A  
REMOVE RAMP

2496C  
INSTALL NEW RAMP  
TYPE 2

2496B  
REMOVE & DISPOSE OF EXISTING RAMP (RAMP IS IN WORNG LOCATION).  
INSTALL 2'-6" CURB AND GUTTER AND SIDEWALK AT THIS LOCATION.  
INSTALL NEW TYPE 2 RAMP NEAR THE FIRE HYDRANT ON N GREENSBORO ST.  
THIS RAMP WILL ACCEPT PEDESTRIAN TRAFFIC FROM A NEW RAMP AT 2496C. INSTALL HIGH VISABILITY CROSSWALK FROM 2496B TO 2496C.

NOTE: HIGH VISABILITY CROSSWALKS TRY TO ALIGN 24' SPACING WITH EXISTING WHEELPATH FOR EACH LANE  
INSTALL HIGH VISABILITY CROSSWALK ACCORDING TO THE 2018 NCDOT STANDARD DRAWINGS

5/14/99

5/14/99

# CURB RAMP CONTRACT – ORANGE & ALAMANCE COUNTIES INTERSECTION NUMBER MAPS

|                       |           |
|-----------------------|-----------|
| PROJECT REFERENCE NO. | SHEET NO. |
| 44917.314             | 15C       |
| R-5787FA              |           |

INT. ID#  
2631  
NOT TO  
SCALE



11/15/2017 10:58 AM  
 C:\Users\jgibson\OneDrive\Documents\2017\11\15\11-15-17\11-15-17.dwg  
 11/15/2017 10:58 AM  
 C:\Users\jgibson\OneDrive\Documents\2017\11\15\11-15-17\11-15-17.dwg

# CURB RAMP CONTRACT – ORANGE & ALAMANCE COUNTIES INTERSECTION NUMBER MAPS

|                       |           |
|-----------------------|-----------|
| PROJECT REFERENCE NO. | SHEET NO. |
| 44917.3.14            | 15D       |
| R-5787F A             |           |

INT. ID#  
2620  
NOT TO  
SCALE

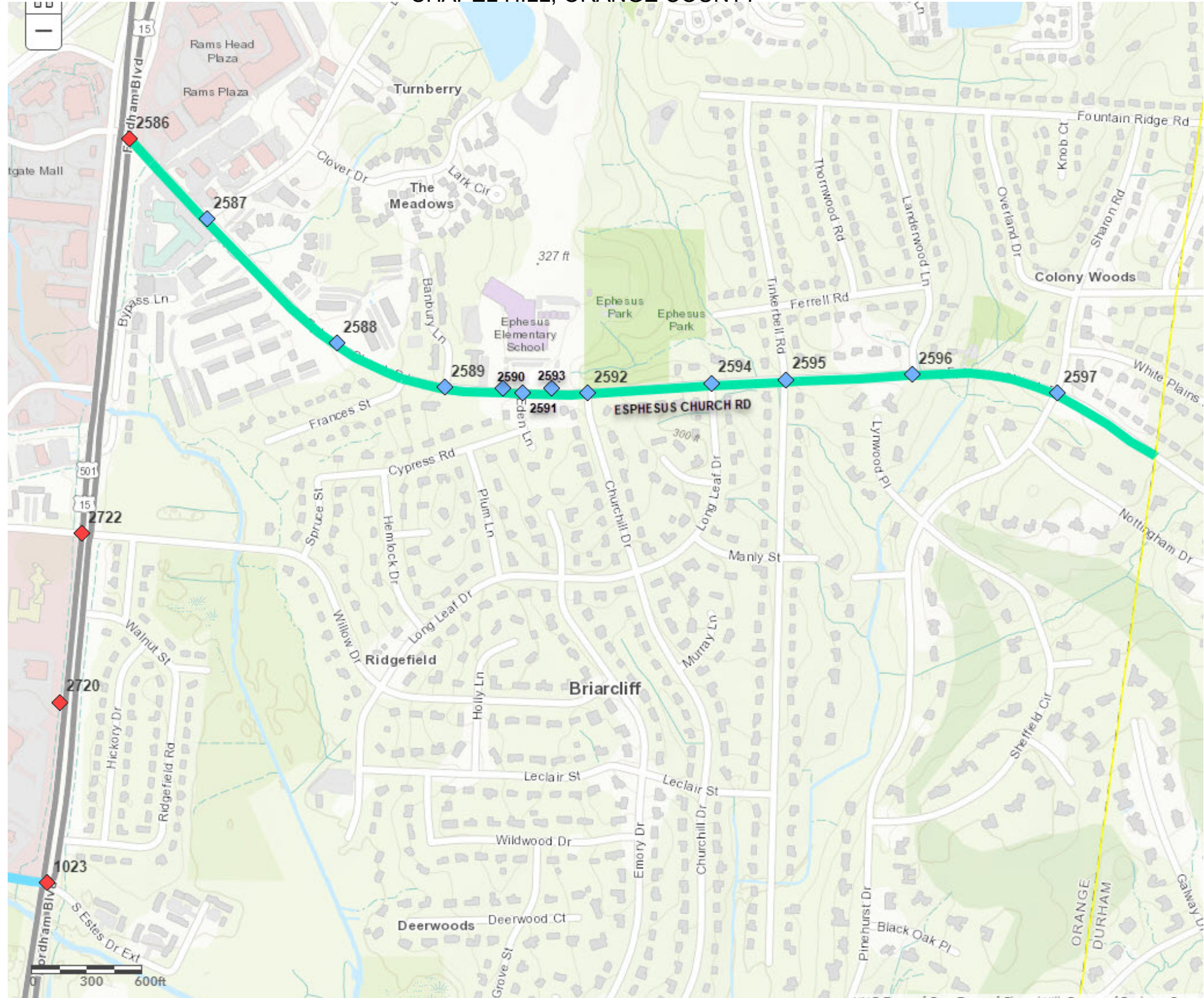


\*\*\*\*\*  
SYSTEMS  
\*\*\*\*\*

# CURB RAMP CONTRACT – ORANGE & ALAMANCE COUNTIES INTERSECTION NUMBER MAPS

|                       |           |
|-----------------------|-----------|
| PROJECT REFERENCE NO. | SHEET NO. |
| 44917.3.14            | 16        |
| R-5787FA              |           |

EPHESUS CHURCH RD - FROM US 15-501 (FORDHAM BLVD) TO DURHAM COUNTY LINE  
CHAPEL HILL, ORANGE COUNTY

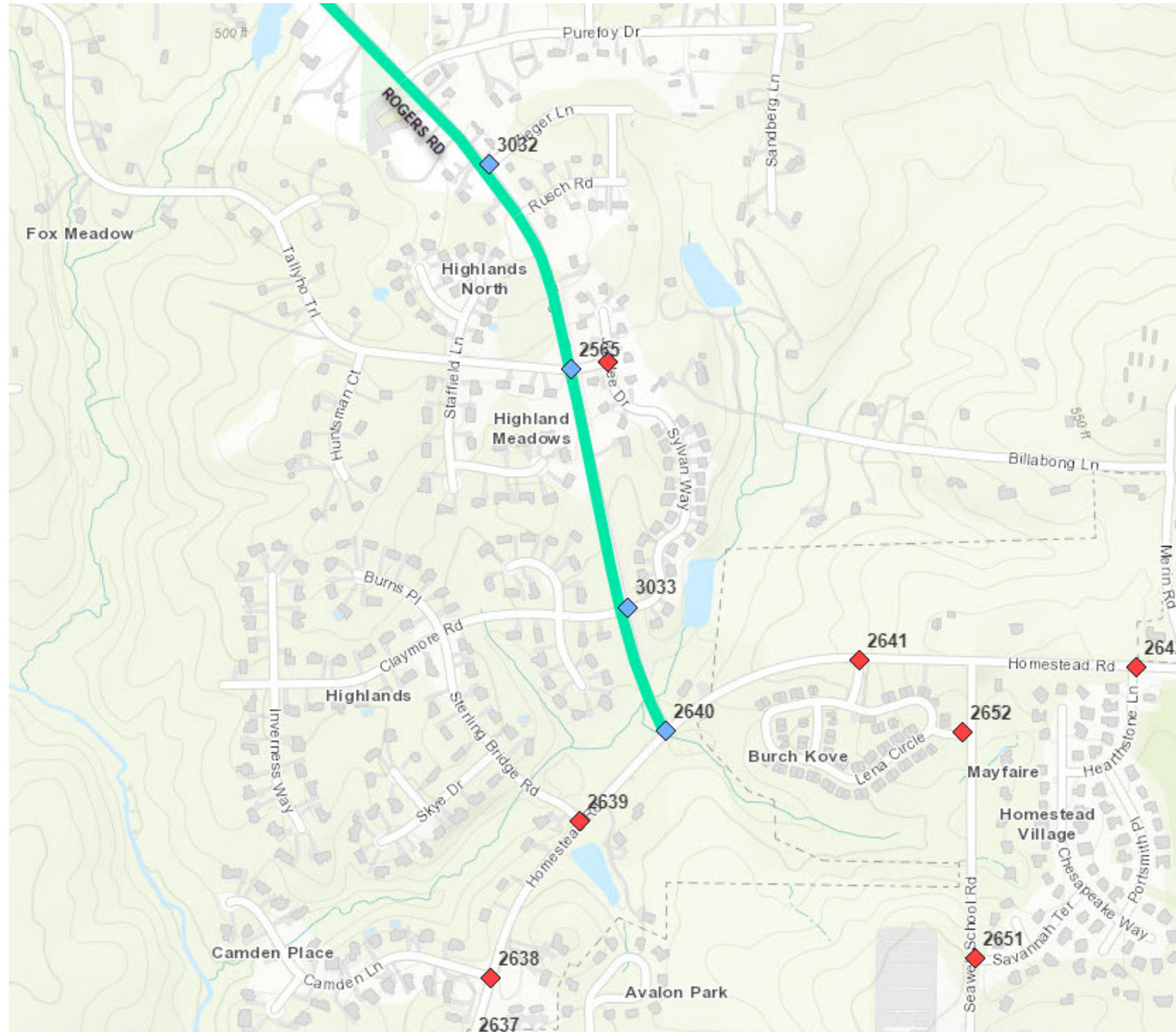


5/14/99  
 29-AUG-2019 11:41  
 S:\CADD\2019\CONTRACTS\R-5787\F\_CADD\R-5787F-Rdy\_BKANK PLAN SHEET .dgn  
 10/15/2019 10:53 AM

# CURB RAMP CONTRACT – ORANGE & ALAMANCE COUNTIES INTERSECTION NUMBER MAPS

|                       |           |
|-----------------------|-----------|
| PROJECT REFERENCE NO. | SHEET NO. |
| 44917.3.14            | 17        |
| R-5787FA              |           |

ROGERS RD - FROM HOMESTEAD RD TO ZIEGER LN  
CARRBORO, ORANGE COUNTY



5/14/99  
29-AUG-2019 11:42  
S:\000\601\VISION\IDE\RS787 ADA RAMP 2019\CONTRACTS\R\_5787\F\_CADD\R-5787F-Rdy\_BKANK PLAN SHEET .dgn

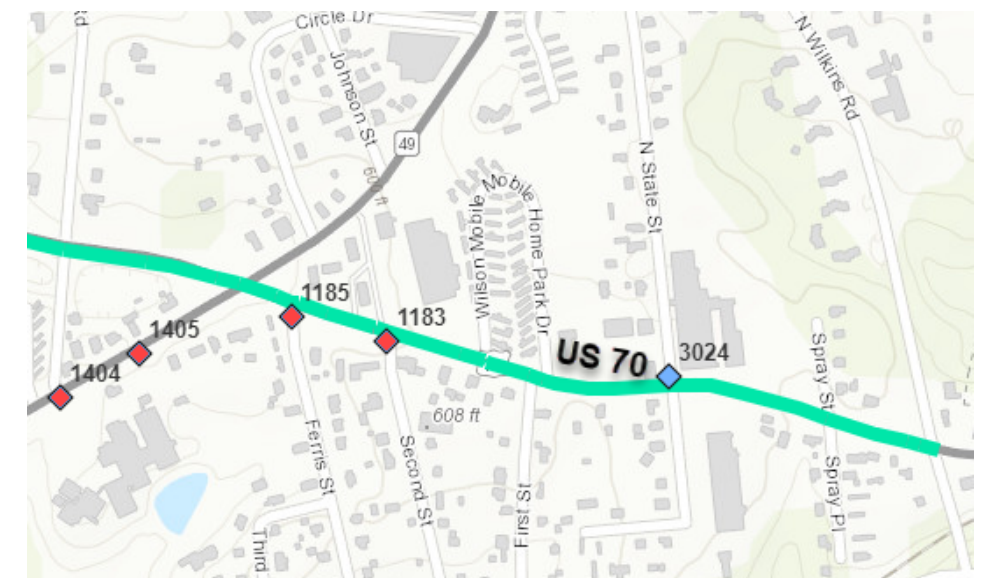
# CURB RAMP CONTRACT – ORANGE & ALAMANCE COUNTIES INTERSECTION NUMBER MAPS



S. GREENSBORO ST. - FROM NC 54 ON RAMP TO  
RAND ST.  
CARRBORO, ORANGE COUNTY



US 15-501 AT MANNING DR.  
CHAPEL HILL, ORANGE COUNTY



US 70 AT N. SLATE ST  
HAW RIVER,  
ALAMANCE COUNTY

06-JAN-2021 10:04  
 S:\0606\GIS\TOWNWIDE\RES787 ADA\_RAMP\2019\CONTRACTS\N.R.5787.F\CADD\N.R.5787F\_Rdy\_BLNK\_PLAN\_SHEET.dgn  
 \$\$\$\$\$\$USER\$NAME\$\$\$\$\$\$